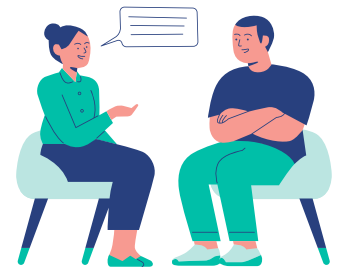


THERAPY MODIFICATIONS FOR AUTISTIC ADULTS

July - December 2024

WHO IS THE TRAINING FOR?

Mental health clinicians and other professionals such as psychologists, social workers, speech pathologists, occupational therapists, mental health nurses, headspace clinicians, peer workers, psychiatrists and registrars, working with autistic adults.



WHO PROVIDES THE TRAINING?

Melanie Cooke is a senior clinical psychologist who has worked with young people and adults in specialist mental health services, community and private practice since 2010. She is skilled in autism diagnostic assessment and is passionate about adapting psychological interventions to make them more effective for autistic people.

Elle Perry is an experienced Clinical Psychologist currently working with adult clients in both private practice and public health settings. Elle is the current coordinator of the Royal Melbourne Hospital Mental Health – Autism Consultation and Evaluation Service. Elle is experienced in assessment for autism and ADHD in adults and is passionate about supporting neurodivergent adults in a therapeutic context.

Leonie Wilson is an experienced Speech Pathologist currently working with autistic clients across the lifespan. She currently works at the Royal Melbourne Hospital - Autism Consultation and Evaluation Service, at The Royal Children's Hospital and in Private Practice.

Lived experience perspectives and contributions from the Mindful Autism team will be embedded throughout this training day.

WHAT DOES THE TRAINING INCLUDE?

This half day workshop will focus on how to adapt mental health therapy to make it more accessible and effective for autistic adults. Learning will include:

- Introduction to neurodiversity affirming practice.
- Key life stages, transitions and experiences that might contribute to autistic adults accessing therapy.
- Lived experience and evidence-based perspectives on adapting psychotherapy for autistic adults.
- Case examples and practical strategies to integrate into your clinical practice.

View all our Autism training workshops at:

<https://mindful.org.au/asd-training>

Please note:

We encourage early registration as some workshops reach capacity quickly. Additional workshops may be scheduled if there is sufficient interest.

Fees listed include the Goods and Services Tax (GST).

Where are we?

Mindful – Centre for Training and Research in Developmental Health
Department of Psychiatry,
University of Melbourne

Building C, 50 Flemington Street,
Travancore VIC 3032



This training will be delivered as a live webinar via Zoom unless otherwise indicated.

Enquiries

Please direct enquiries to Frances Saunders, Statewide Autism Training Coordinator at:

✉ mindful-asd@unimelb.edu.au



DATE (9:00am - 12:30pm)

Monday 11 Nov (live webinar)

COST: \$130

Subsidised rate of \$65 is available to Victorian CYMHS/CAMHS/ICYMHS/AMHS: including Orygen, Victorian headspace, ACCHO/ACCHS, Take Two clinicians. and clinicians employed by Victorian public mental health services (including Forensicare).

Register online at <https://mindful.org.au/asd-training>



THE UNIVERSITY OF
MELBOURNE